

1 Introduction

SafeFit is part of the *SafeSuite* family of products, which aid in the development of projects following the common industry's safety standards.

SafeFit focuses on the reliability prediction of electronic equipment. Reliability of a component is summarized in a so-called FIT value (Failure-in-time), which is calculated according to several rules from a chosen standard.

SafeFit currently supports these reliability prediction standards:

- IEC 62380 (International Electrotechnical Commission)
- MIL 217F (USA Military)

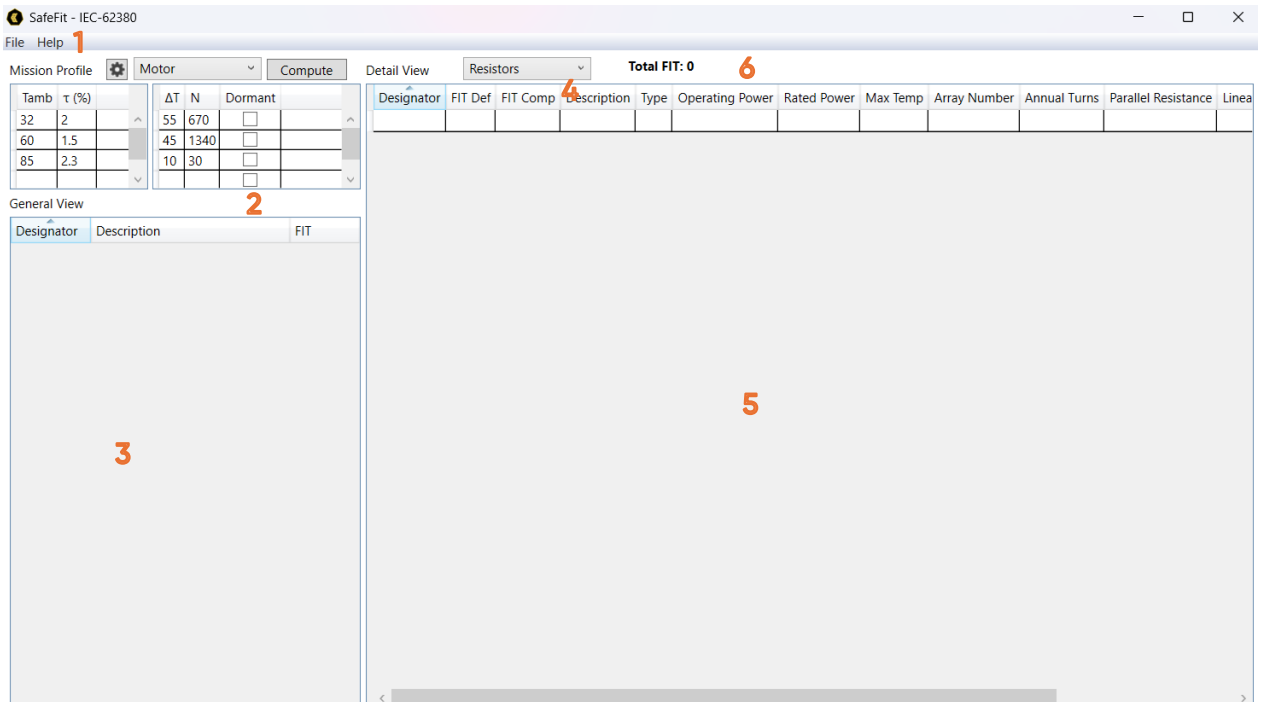
1.1 Features

- Support for IEC62380, MIL217F.
- Import/Export of data in CSV for interoperability with external programs.
- Save/Load data in custom format enabling app-specific features.
- Grid-based, single-view interface.

Fully keyboard and mouse enabled. Copy/Paste support to/from clipboard.

2 Usage

2.1 Application parts



1. Menu
 - a. File > (New > (IEC-62380 | MIL-217F) | Load | Save | Import | Export | Exit)
 - b. Help > (About | License)
2. Standard's global parameters
3. General view grid
4. Display component selector
5. Detail view grid
6. Total FIT (added value)

The above screenshot shows the initial state of the main window, which by default uses IEC-62380.

The global parameters section is standard-specific. Further details are discussed in their own section. There is a "Compute" button for quick batch recalculation when global parameters are changed. Per component re-calculation, however, is also done after any row editing.

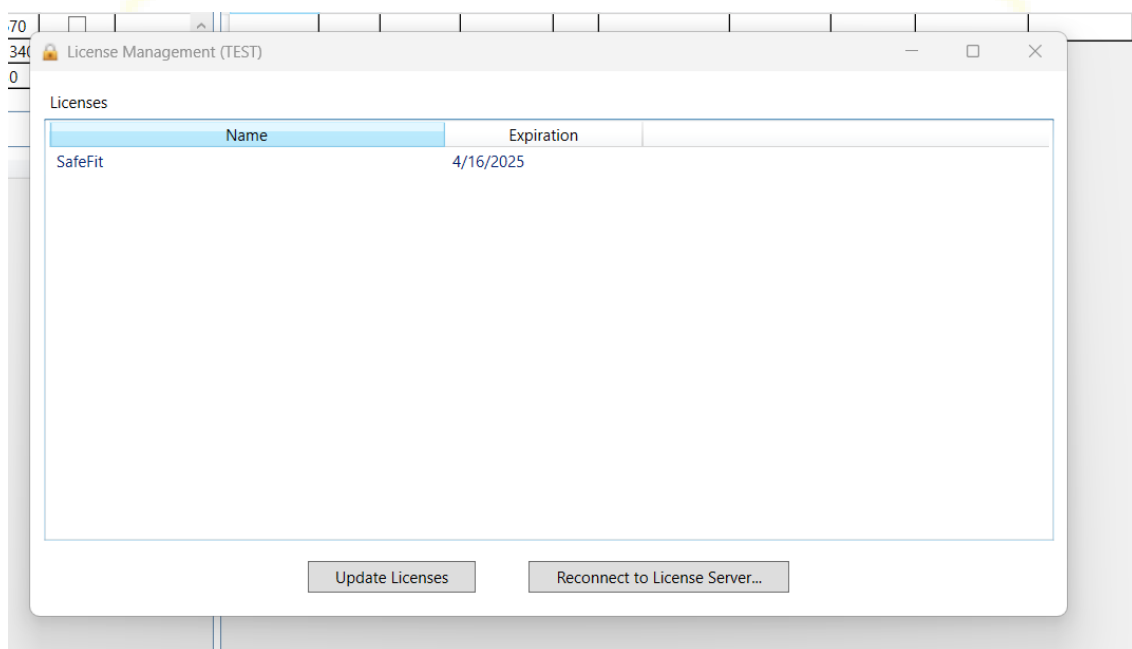
The general view is intended for quick review of current loaded components. Supports sorting of its columns for easier navigation.

The detailed view is where all components are added/removed, and its details edited. The current component type in display is selected through a combo box. Component types depend on the standard too, but are quite similar, nonetheless. The grid supports sorting and column reordering.

2.2 Licensing

You cannot use the SAFEFIT tool without a registered license. "No license" state blocks the Save, Import, Export features. Loading is still possible for demo purposes but severely limits the application's usability.

Your license status can be checked within the "Help > License Management" dialog. The dialog allows you to update your license, in case this is the first time you enter the application, or to reconnect to the license server in case the connection has been disabled.



In normal operation mode the application would reach the server by itself and thus your active license should appear on the dialog box.

NOTICE: Remember in any case that you will be requested to activate your license through email after your purchase.

2.3 License Activation Process (Node Lock)

1. Obtain your license key or invitation email by purchase or contacting safesuite@cynoss.net

2. Log in to the License Manager through your browser.
3. Authenticate and activate.
4. Install and launch SafeFIT, so your node data can be stored by the system.
5. Wait for your license to be assigned by the supervisor.

Now you are ready to use your SafeFIT.

NOTICE: SafeFIT licensing system uses the port https 7072 for monitoring purposes. Please be sure this is available for the application. We beg you to carefully read the EULA documentation for further details.

2.4 Standard selection

The currently used standard can be selected through the "File > New" menu. This clears current data and initializes the workspace for such standard.

Additionally, when loading a project file, the appropriate standard for the project is loaded seamlessly.

The current standard is always indicated in the app's title bar.

2.5 Detail view workflow

There are four common columns used by all components:

- Designator
- FIT Def
- FIT Comp
- Description

The designator value depends on the selected component and the standard. Valid values are shown in this document. However, they follow the rule: "<name><number>[<subitem>]" (R1, C1, U1A, ...).

- **Name:** standard designator, e.g. R – Resistor, C – Capacitor, etc.
- **Number:** any positive number.
- **Subitem:** optional upper-case letters for further categorization.
- **"FIT Def"** stands for defined FIT, which is an independent cell included for reference/comparison purposes.

- **"FIT Comp"** stands for computed FIT. These cells are not directly editable, but change according to the calculated FIT for the current input parameters.

In general, a cell with invalid data, e.g. negative value for a positive only decimal value, is marked with a red border.

The application, according to the standard in use, groups components into single or groups of several electronic components, e.g. resistors or optoelectronics.

The "Type" column is somewhat special and indicates the actual component type in groups of components, or component subgroup. This is very intuitive in general.

Some columns may appear grayed out, meaning that its value is not necessary for the calculation of the FIT for the selected type.

When all required values are filled in, the FIT is automatically computed. This is also the case when editing an existing value. However, global parameter changes require batch recomputation with the "Compute" button.

The grid supports copy/paste both between itself and external programs, since it uses the system's clipboard. Hence, data in the clipboard with tabular format (e.g. Excel) can be easily pasted into the program. Either row, column or rectangle selection is supported. Pasting however, will only work when the input data and the target cells have the same data types. The user can move data to/from Excel this way, for instance, and experiment with the feature.

QUICK TIPS:

- Cells can be empty. Press "Backspace" key with a cell selected in order to clear it.
- Rows are added filling in the cells of the last row and pressing "Enter" key.
- A single row can be deleted fully selecting by clicking on the row header and pressing the "Del" key.
- All rows of the displayed component can be deleted with "Right Click" > "Delete Rows".
- All cells of a column can be cleared with "Right Click" > "Clear Column".
- Similarly, copy and paste operations are available through the context menu ("Right Click") as well as with the system's usual "Ctrl-C", "Ctrl-V" key shortcuts.

The application can read and write CSV files. This enables interoperability with external programs like Excel for instance. However, this becomes more interesting with the fact that PCB board designers like "Altium Designer" can export the BOM (bill of materials) in CSV with extra, configurable parameters per component. Thanks to this, once the

external program is correctly configured, the calculation of the FIT of all components in the BOM is quick and error-free.

The CSV format requires a minimal compulsory header of just one column: "Designator". All other columns are optional. Values of optional columns are also optional, i.e. empty values are allowed.

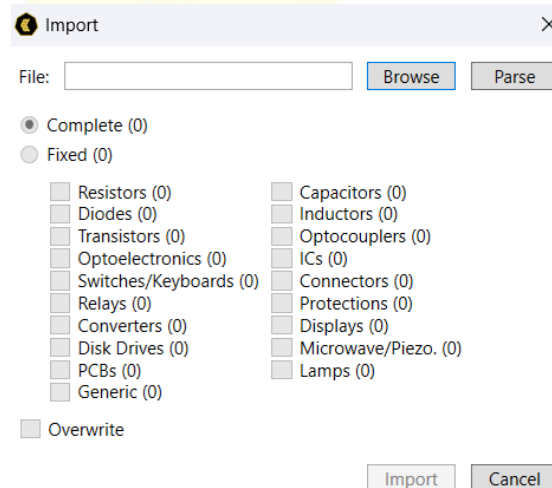
There are columns of various types:

- String: accepts any value, since CSV data is text by definition.
- Decimal: integral or decimal values, in exponential notation too.
- Enumerable (list): accepts either an integral value in the range of index values (zero-based), or the exact string value of one of the items in the list.

The type of column is predefined and can be reviewed in the appendix of a given standard (in this document). Watch out for units in numerical values.

Note: when importing CSV data, make sure that the app's selected standard matches that of the CSV, or else there will be import errors (likely to interrupt the import process).

2.6.1 Import dialog



A CSV file is selected by clicking "Browse" and searching for it with the usual system's file explorer.

The file is automatically parsed when browsed. If a path exists in the textbox and the user wants to reload it, it can be done by clicking "Parse".

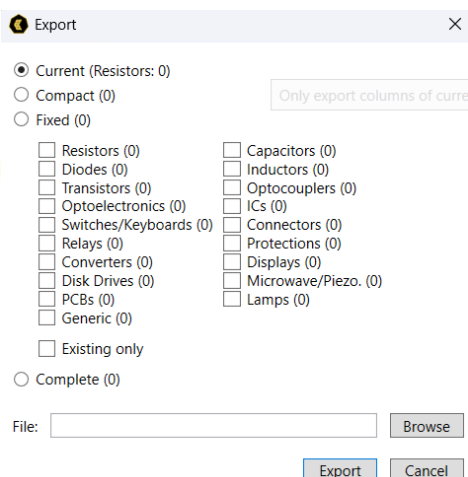
File contents can be imported completely ("Complete" option) or in parts ("Fixed" option plus individual component checkbox selection).

Imported data components type and number can be reviewed easily.

Imported data can either be appended ("Overwrite" unchecked) to existing data or it can replace existing data ("Overwrite" checked).

Final importing into the current project dataset is done by clicking "Import".

2.6.2 Export dialog



The current data set can be exported completely ("Complete" option) or in parts (other options).

Included column headers depend on the selected option. "Complete" includes all columns. "Fixed" includes only those selected, independently of having existing items or not. "Current" exports current selected component in the detail view. "Compact" exports all with existing items.

Select "Existing Only" to export only selected components with non-zero items.

Click "Export" to accept and finish the export operation.

2.6.3 Report dialog

The report dialog will allow you to generate and store a PDF file containing all the information on the analysis, e.g. Name, Standard, Mission profile, Total FIT and the calculation for every component.

2.7 Save/load

The project file has ".sfit" extension. This file enables app-specific functionality that CSV import/export features cannot provide. Among other features, it stores the current standard in use and its global parameters.

Save/load of project files is done through the "File" menu.

3 IEC 62380

Global parameters for IEC-62380 are called "Mission Profile". These include several **thermal phases** (each characterized by an Ambient Temperature and a time ratio Tau) and several **thermal cycles** (each characterized by a temperature Delta, a Number of cycles, and a Dormant parameter).

Standard mission profiles from the IEC 62380 TR can be easily selected through the "cog" button (mission profile settings). After any change, the "Compute" button must be clicked for a complete recalculation.

The "Delta Temperature" parameter of the mission profile can be overridden in some components of the standard that include an auto-heating term in their FIT formulae. The appropriate column is "Delta T" (in Celsius).

NOTICE: "Delta T" override functionality can be used to apply a complex thermal scheme to the calculated system. When empirical auto-heatings are not available, SafeFIT will use calculated predictions based on component characteristics and electrical operating conditions.

NOTICE: "Dormant" check box can be used to define a thermal cycle for a dormant or off state of the system (no auto-heating considered). Please check IEC 62380 TR for further information.

For a complete list of components, designators, parameters and values, see the appropriate standard reference for SafeFit.

4 MIL 217F

This standard's global parameters are only "Ambient Temperature" and "Environment" type.

Many components have "Type" and "Style" (or subtype) columns. Parameter values that are input via a list require a component's type to be committed before allowing further input. Make sure to press enter (commit) after creation of a component with its type before filling in the rest of the parameters. This also sets up the appropriate parameter vs. type sensitivities.

In general, "Type", "Style" and "Quality" columns are shared among most of the components of the standard.

The profile's ambient temperature is overridable in many components using the "Tamb" column.

NOTICE: "Tamb" override functionality can be used to apply a complex thermal scheme to the calculated system. When empirical temperature measures are not available, SafeFIT will use calculated predictions based on component characteristics and electrical operating conditions.

Several components with an auto-heating factor provide two ways to input the auto-heating required parameters: either use "Power" and "Rth", or "Tj" (junction temperature – has precedence).

NOTICE: When "Tj" is provided, SafeFit will use it to calculate component's self-heating. When it is not provided, SafeFit will do calculations based on thermal resistance (Rth) and electrical power (Power).

For a complete list of components, designators, parameters and values, see the appropriate standard reference for SafeFit.

5 IEC 61709

If you are used to the old SN29500 standard, 61709 is a ready to use version. The idea behind it is to translate FIT values from a set of operating conditions to other ones. The approach taken is more experimental, which can lead to more realistic results if the reference data is taken from conditions like those seen by the final device. It is also less costly to work with, as it is simpler (has less parameters).

This implies that some input reference or experimental data is required for this standard to be applicable. Ideally, experimental data for a similar device or condition is best. Otherwise, the standard by Siemens "SN29500" provides reference data which is good enough. As a last resort, reference FIT data can be computed by using any of the more theoretical standards implemented in **SafeFit**. Moreover, the app comes with SN29500 data that can be used for convenience.

The standard has the concept of reference conditions. In SafeFit, the concept of experimental and operational data is introduced. Experimental data is field data, i.e. data that is obtained by collecting reliability data from components of devices in the field. Operational data is FIT data for a final device for which reliability is being assessed, under a specific set of operation conditions.

The panel is designed with two workflows in mind:

- Introduce experimental FIT data and compute the reference FIT data.
- Load reference FIT data and use that to compute operational FIT data.

Experimental or operational data is displayed by changing the combo box selection.

The general view data grid shows all components in the system (operational) for convenience.

The "Compute" button is used to refresh internal data and recalculate FIT's. For performance reasons, some changes will only be propagated when pressing this button. In many cases, however, changes will take effect immediately.

There is a settings button (cog icon) that is explained in its own subsection.

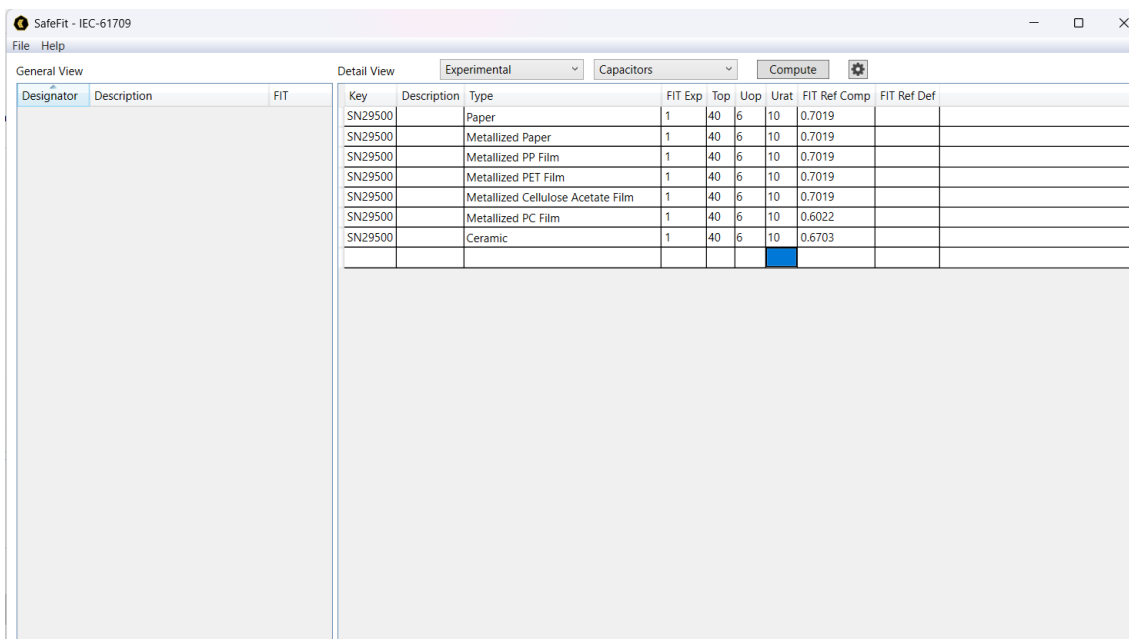
Import/export functionality works similarly to what has been explained before. The difference in this standard is that both experimental and operational data can be imported/exported independently. The input/output CSV files have the same structure for both experimental and operational data.

Something to note is that experimental data to be imported needs to have appropriate designators, as this is the only way to tell which type of reference component is contained in each row. Exported experimental data will have such designators already. Not all columns are exported, only those of interest. Similarly, not all columns are imported, so there can be user-defined columns in the CSV.

The import process will only stop when validation errors are found, which typically will happen when a type-related field has a typo. Error dialogs should give enough info to find the issue.

For a complete list of components, designators, parameters and values, see the appropriate standard's reference for SafeFit.

5.1 Experimental data



The screenshot shows the 'SafeFit - IEC-61709' application window. The 'Detail View' tab is active, displaying a table of experimental data. The table has columns for Key, Description, Type, FIT Exp, Top, Uop, Urat, FIT Ref Comp, and FIT Ref Def. The data rows show various capacitor types like Paper, Metallized Paper, Metallized PP Film, Metallized PET Film, Metallized Cellulose Acetate Film, Metallized PC Film, and Ceramic, each with associated FIT values.

Key	Description	Type	FIT Exp	Top	Uop	Urat	FIT Ref Comp	FIT Ref Def
SN29500		Paper	1	40	6	10	0.7019	
SN29500		Metallized Paper	1	40	6	10	0.7019	
SN29500		Metallized PP Film	1	40	6	10	0.7019	
SN29500		Metallized PET Film	1	40	6	10	0.7019	
SN29500		Metallized Cellulose Acetate Film	1	40	6	10	0.7019	
SN29500		Metallized PC Film	1	40	6	10	0.6022	
SN29500		Ceramic	1	40	6	10	0.6703	

The reference/experimental data is managed via this data grid. This data is later used in the computation of operational FIT's. There is no limit to the number of reference components available in the data grid. These do not have the concept of a designator since an operational component and its reference component counterpart are linked by the type.

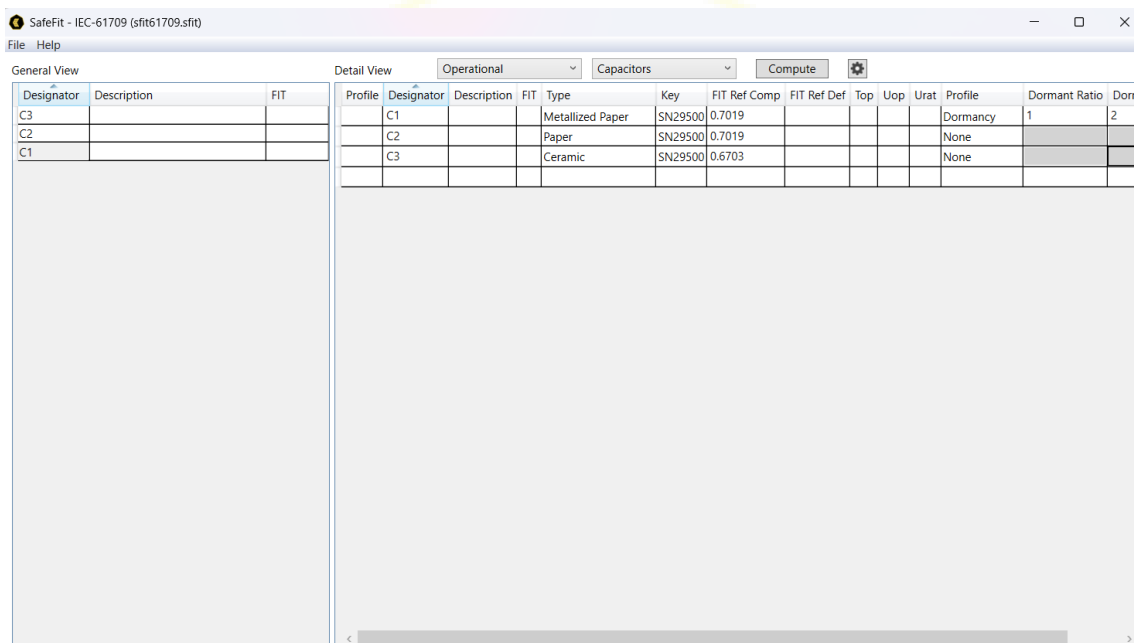
There is a set of columns that is common among components. These are:

- **Key:** this can be any text. The idea is to be used as a category. This is a non-unique field. This is useful when there is more than one reference component of the same type (and subtype if any), in which case the "Key" field helps in distinguishing between them. This field is later referenced in the operational data grid.
- **Description:** optional brief description of the component or its function, for instance.
- **Type:** type of component, as stated in the standard. Some names have been shortened for convenience. See the reference for details.
- **FIT Exp:** the experimental FIT value. Units are $1E-9 \text{ h}^{-1}$.
- **FIT Ref Comp:** Computed reference FIT. Only updated when all required data is filled in.
- **FIT Ref Def:** defined reference FIT. If present, this value overrides "Fit Ref Comp" as the reference FIT to be used in operational data computations.

Apart from these, more columns can appear depending on the selected component. These basically fall into two categories:

- **Subtype columns:** there are two kinds of components in the standard, when it comes to types: those with simple types and those with complex types. A simple-type component has no subtypes, whereas a complex-type component has at least one subtype, and its type is only fully defined when the type and all subtypes are selected.
- **Parameter columns:** these are the operation temperature, voltage, current, rated voltage, rated current and so on. In other words, these define the operation conditions for which the experimental FITs were collected.

5.2 Operational data



Profile	Designator	Description	FIT	Type	Key	FIT Ref Comp	FIT Ref Def	Top	Uop	Urat	Profile	Dormant Ratio	Dom
	C1			Metallized Paper	SN29500	0.7019					Dormancy	1	2
	C2			Paper	SN29500	0.7019					None		
	C3			Ceramic	SN29500	0.6703					None		

The operational data is managed via this data grid. These are really the components present in the device for which FIT values need to be computed.

There is a set of columns that is common among components. These are:

- **Profile** (leftmost): this is a button column. The button will only be shown when the profile type is "Complex". When pressing this, the complex profile row detail will open/close.
- **Designator:** the name of the component. No validation is done on this field, but following the convention is recommended.
- **Description:** optional brief description of the component or its function, for instance.
- **FIT:** final computed FIT result.
- **Type:** type of component, as stated in the standard.
- **Key:** reference to the "Key" field in the experimental data. Here will be listed the key of each experimental component of the exact same type. If only one exists, it

will be auto-selected after the operational component is fully type-defined (for convenience).

- **FIT Ref Comp:** FIT value of the associated reference component.
- **FIT Ref Def:** if a value is present here, it will override the value of the field "Fit Ref Comp". This allows overriding the reference FIT per component if necessary.
- **Profile:** type of mission profile for the component. There are 3 types of profiles: None, Dormant, or Complex. See details below.
- **Dormant Ratio:** ratio of time when the component is in dormant state. This field is only enabled when the "Dormancy" profile type is selected.
- **Dormant Factor:** FIT reduction factor when the component is in dormant state. If this field has a value, it will override the general setting.
- **Time Ratio:** (profile data grid only) ratio of the operation time when this profile scenario is active.

Apart from these, more columns can appear depending on the selected component, just as described before.

In this standard, the mission profile is not a general setting. Instead, each component can have its own mission profile that depends on its type and the specific conditions it is subject to. **SafeFit** accounts for three different profile types:

- None: no mission profile.
- Dormancy: the component is passive during a certain ratio of its operation time, having reduced stress (FIT) during that period. The final FIT will be:

$$FIT_{Dormancy} = FIT[ratio + factor(1 - ratio)]$$

- Complex: the component can be in different operational states during part of its operation time. In this mode, dormancy can be activated optionally, in which case it will use the first item in the profile data grid as the full stress conditions. If activated, it will automatically take the remaining time ratio as the dormant period. Bear in mind that the sum of time ratios is expected to be between 0 and 1. There is no validation on this, but exceeding this range will result in incorrect FIT values. The final FIT will be:

$$FIT_{Complex} = \sum_{i=0}^N t_i \cdot FIT_i + t_d \cdot \rho \cdot FIT_0$$

t_d Dormancy time fraction

t_0 Full stress time fraction

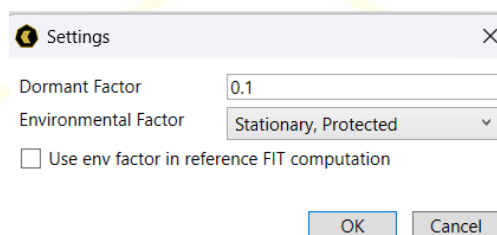
ρ Dormancy FIT reduction factor

$$\sum_{i=0}^N t_i + t_d = 1$$

In many cases, using the dormancy profile may be enough. However, if more precision is required, the complex profile can be selected independently per component. Not being an all-or-nothing option is convenient so that the data input effort is kept constant.

C19	13.34	Variable	SN29500	10	70	4	10	Complex
Description	FIT	Top	Uop	Time Ratio	<input checked="" type="checkbox"/> Use Dormancy Dormant Ratio 0.2 Dormant FIT 0.3253			
Full	8.133	70	4	0.5				
Partial	4.88	70	2	0.3				

5.3 Settings



Settings

Dormant Factor

Environmental Factor

☐ Use env factor in reference FIT computation

OK Cancel

There is a general dormant factor that can be edited in this dialog. This value will apply to all components where dormancy is enabled, only if the dormant factor column for that row is empty, since this field has priority.

The standard has the concept of an environmental factor. This is applied on top of all other factors (temperature, voltage, etc.). There are only three cases, accounting for increasingly harsh environmental conditions. In the end, the factors are 1, 2 or 4 (multiplicative).

In general, the factor is most useful for operational data computation. However, in case it needs to be applied to experimental data computation, there is a checkbox to enable that. Bear in mind that this is a general setting. If experimental data were to come from a device with different environmental conditions, then the process would have to be split in two steps: first computing the reference FIT's and exporting that (or copying to the "Fit Ref Def" column) so as to somehow freeze the data, and then setting the appropriate environmental factor for the operational data and using the frozen reference data.

6 Tips, how to and more

There is a dedicated series of videos prepared to ease your job in our YouTube channel accessible through our Web Page www.cynoss.net

Nevertheless, do not hesitate to reach us at support@cynoss.net if you have any query. Remember that technical webinars are periodically scheduled by our technical team. We encourage you to log in to our users community to keep in touch with the development team.

Explore additional tutorials, walkthroughs, and updates on our channel.

7 FAQs

check www.cynoss.net

What does "node-locked" mean?

Your license is tied to a computer. So far SafeSuite licenses operate this way.

Can I transfer a license to another machine?

You can do it under request maximum 4 times

Is SafeFIT only an on-premised software?

Yes, so far it is. Being such a specific tool, it is easier for us to manage. Let us know if you'd like to have a cloud version.

Is there a free trial available?

Sure! Just ask as by clicking on the "Free Trial" button on the web page

Is there a usage limitation in the EULA?

You should have downloaded the document in the same package.

Do you offer academic or startup discounts?

We offer students fee. Willing to hear from you... just contact us.

Is technical support included in the license fee?

We have a complete set of documentation, including videos and shorts in YouTube. Nevertheless, if you miss something just contact support@cynoss.net. Specific training and hot line support do have a price.

Can I import my excel data?

Sure! Check out the chapter 2.6.1. in this same document for how to.

How your AI model works?

Nowadays just simple help tools are being tested. You'll be able to use them for quick approaches and user guide.

Are you planning to add other standards like Bell Labs or some others?

We are glad to hear your feedback and proposals. Nevertheless, it is not planned to add standards (unless the market asks for it with enough force).

Can I change the company logo on the report?

You can name it as you wish. Once the final integration in the toolchain is finished, we will release this feature for you.